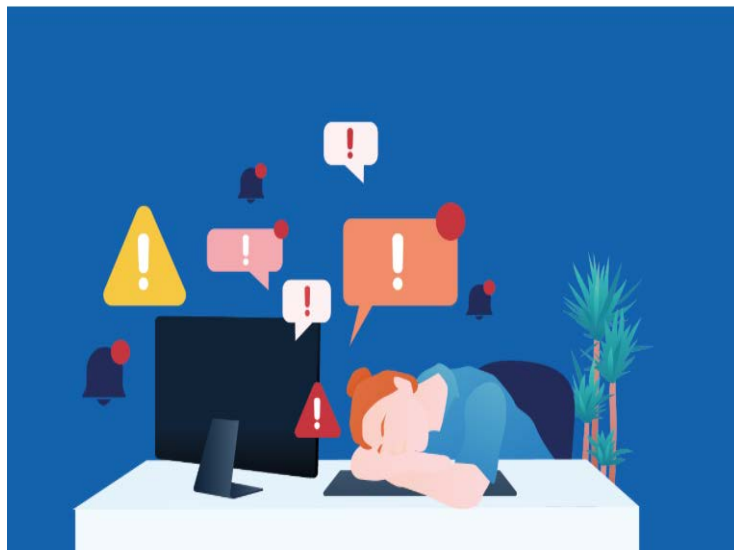




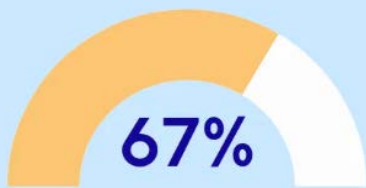
## BlueTrac® for Parolees/Probation

### Successfully Combating Alert/Alarm Fatigue

At Endur ID Inc. we take alarm fatigue seriously. The goal of our BlueTrac® product is to provide officers and victims with timely and critical feedback concerning geofence keep-in and keep-out threats and violations. The same hold true for interruptions in communication at the hardware and cloud-based network level. But there are times when these events are not intentional or with malicious intent. BlueTrac® uses geofence thresholds to distinguish between parole violation alarms for keep-in or keep-out area (e.g., curfew house arrest locations, work locations, victim location, rehabilitation meeting locations, etc...). VS close proximity alerting.



**Introducing alarm delays  
before notifying staff can  
reduce false alarms by up to**



Source: nih.gov

**DROPSTAT**

These thresholds alerts and any intermittent and inadvertent hardware communication interruption alerts are all configurable to reduce alert/alarm fatigue and control the amount and type of communication you prefer to gain. Configurations can be setup to be uniform across an entire municipalities organization or unique for Adult VS Juveniles or unique for each individual parole officer. Configuration options range from not communicating geofence threshold alerts or hardware communication interruption alerts to parole officers and/or victims to communicating all such alerts. The choice is yours about what balance you prefer and desire in gaining your alerts and limiting threats of alert/alarm fatigue.

Lastly, we also train and recommend a pragmatic approach in creating keep-in and keep-out geofences that enable adequate coverage of spaces without being overly and unnecessarily confining and in-turn vulnerable to false alarming.